

ROBNÝ POHLED flat pattern

PŘEKLAD

12-05-2016

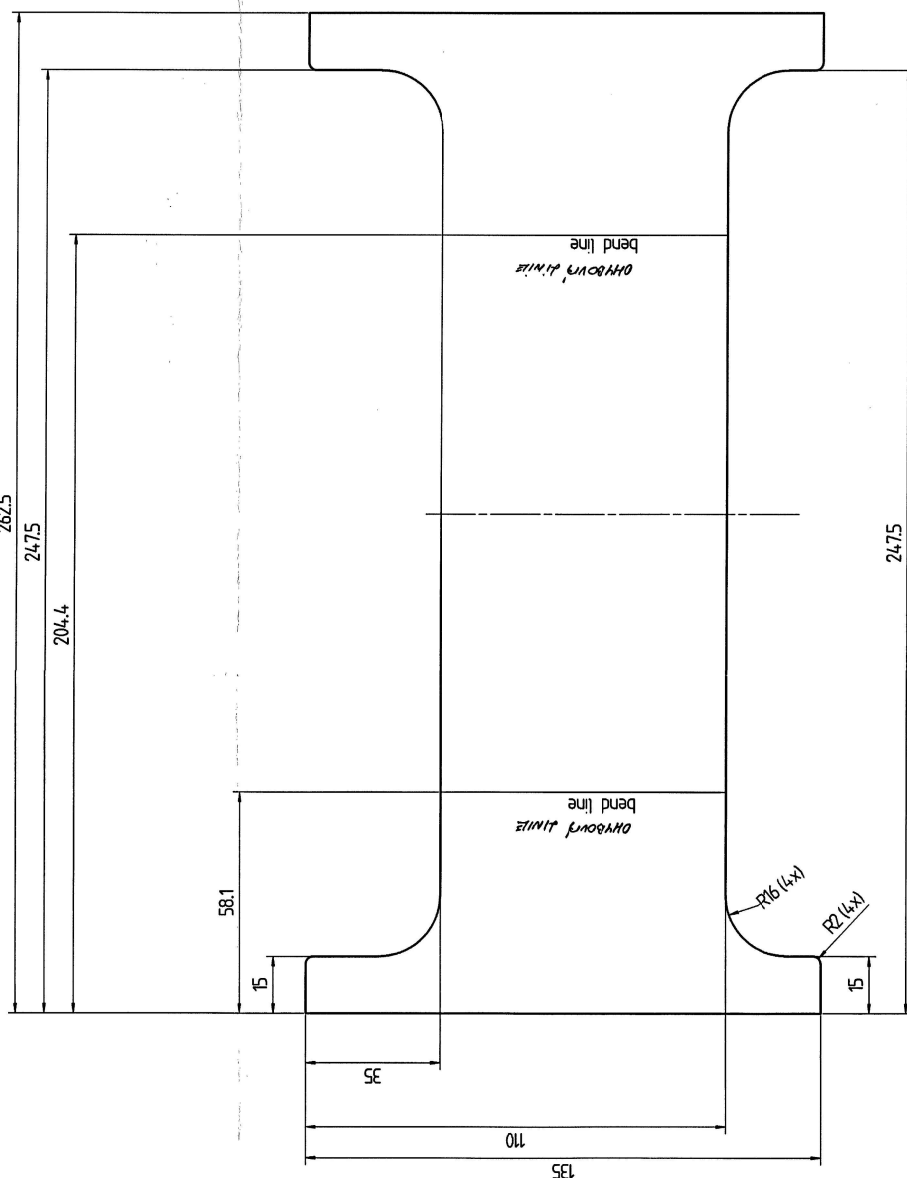
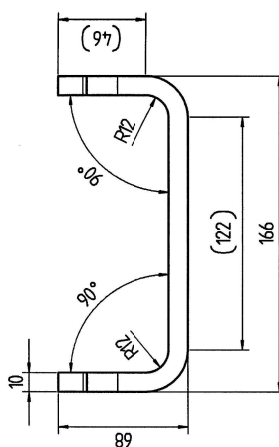
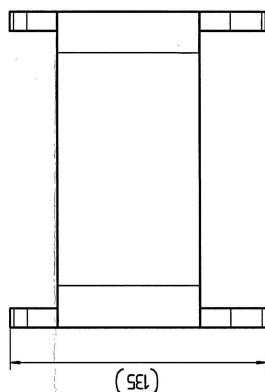
PROVEDLÁ:
JANA PROKEŠOVÁ

1:1

262,5

24,75

204,4



13-05-2016
ARCHIV

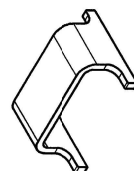
8M/16/00518

STAV DOBŘÍ
OVĚŘENÝ
DEK ORGÁN
OVĚŘENÝ

Condition at time of delivery	de-scaled (degree of purity)	SA 2 12 acc. ISO 8501-1	without burrs acc. WN 1030	Permissible top-end rounding during flame cutting (also positive lead acc. WN 10572)	at-free / free of grease	dated	allowing permissible	Indicate the required condition at time of delivery with an X.
x	x	x	x	x	x	x	x	x

outline length WN 10535	outer width 910.0 mm	inner width -- mm	Tolerances for section to DIN 6930 Part 2 accuracy grade m
-------------------------	----------------------	-------------------	--

1:5



First angle projection	General tolerance (L1) in mm									
	Size range									
	≤ 30	30 - 120	120 - 400	400 - 1000	1000 - 2000	2000 - 3000	3000 - 4000	4000 - 6000	6000 - 10000	10000 - 15000
UT coarse	1	2	2	2	3	3	4	4	6	8
	1	2	4	6	8	10	12	16	20	25
<p>UT lengths (L) in mm</p> <p>Tolerance Symbols ISO 1101</p> <p>UT straightness/flatness = $\sqrt{12}/20$</p> <p>UT roundness/circularity = $\sqrt{12}/20$</p> <p>UT concentricity/total run out = $\sqrt{12}/20$</p> <p>UT symmetry = $\sqrt{12}/20$</p> <p>UT parallelism = $\sqrt{12}/20$</p> <p>UT position = $\sqrt{12}/20$</p> <p>UT angles = $\sqrt{12}/20$</p>										